

- Ability to set the zones in Coincidence Mode
- Two phases of Fire condition, programmable time for Fire condition stage I, separately for each zone
- Option to prolong the time period for Fire condition stage I with programmable inspection period, specified for each zone
- Built-in sounder for fire condition – one tonal, discontinuous, can be switched off
- Built-in sounder for fault condition – one tonal, discontinuous, can be switched off
- Built-in real time clock
- Set of test modes and options for adjustment

Setting the clock:

- Check-ups on light and sound indications
- Test of fire alarm zones
- Adjustment of outputs and integrated external devices
- Programming of parameters and modes of operation
- Remote programming of the parameters from distant operator control point
- Energy independent event log of registered events with the events type, date and hour – up to 1023 events
- Interfaces for communication with external devices – CAN 2.0B and USB.

Indications of registered events:

- Light indication – LED
- Text messages – LCD display, 320 x 240 points, backlit
- Sound signaling – built-in sounder

Power supply:

Mains:

- voltage – 220/230V
- frequency – 50Hz

Back up batteries:

- battery type – lead, gel electrolyte
- number of batteries – 2 pcs
- connection – serial connection
- nominal voltage of the back up battery – 2x12V DC
- nominal capacity C20 – 7Ah
- charge voltage – 28V

Consumption on back up batteries supply:

- at 24V – <160mA
- at 26V – < 150mA

Power supply to external devices:

- Voltage – (24±5)V
- Maximum current value (including current of monitored outputs) – 1A

Dimensions:

- Overall dimensions – 286 x 148 x 125 mm
- Weight (batteries not included) – 1.240 kg.



EVPU

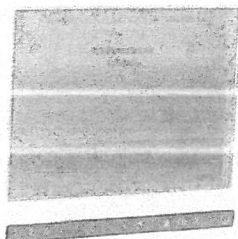
Office building UniPOS,
1 Efr. Nikola Paskalev Str., Mladost 1, Sofia 1748, Bulgaria
Phone: +359 2 97 439 25, +359 2 97 444 69

47 San Stefano Str., Pleven 5800, Bulgaria
Phone: +359 64 891 100

www.unipos-bg.com

UniPOS Ltd. reserves the right to alter the specifications of its products without notice. Although every effort has been made to ensure the accuracy of the information contained in this document it is not warranted or represented by UniPOS Ltd. to be a complete and up-to-date description. No liability is accepted for any consequence of the use of this document.

Interactive Fire Control Panel IFS7002 1 signal loop



The Interactive Fire Control Panel IFS 7002 is an up-to-date, high reliable, multi-functional and versatile device, providing the user with unexpected potential in the design, installation and operation of addressable fire alarm systems.

Technical data

Physical configuration:

- 1 fire alarm loops
- 2 monitored outputs
- 1 relay outputs for fire condition
- 1 programmable relay outputs for fire condition
- 1 relay output for fault conditions

Fire alarm zones:

- Maximum number of zones – 64
- Maximum number of fire detectors and in-out devices – 60

Fire alarm loops:

- Maximum number of fire detectors in a loop – 125
- Connecting line – two-wire shielded
- Maximum resistance of a loop – 100
- Output resistance of a loop – 20
- Maximum consumption of a loop – 200mA

Monitored outputs: – 2 pcs

- Type – potential
- Electrical characteristics – $(24 \pm 5)V/0,5A$

Relay output for fire conditions – 1 pc

- Type – potential free, switching
- Electrical characteristics – 3A/125VAC; 3A/30VDC

Relay (programmable) output for fire conditions – 1 pc

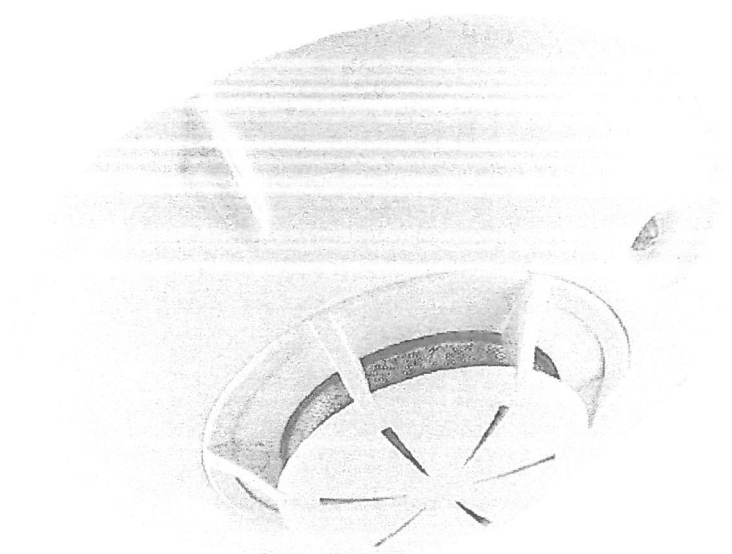
- Type – potential free, switching
- Electrical characteristics – 3A/125VAC; 3A/30VDC

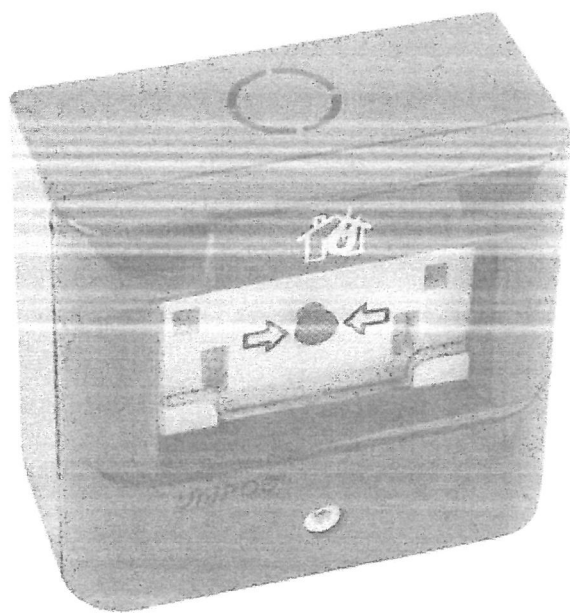
Relay output for fault conditions – 1 pc

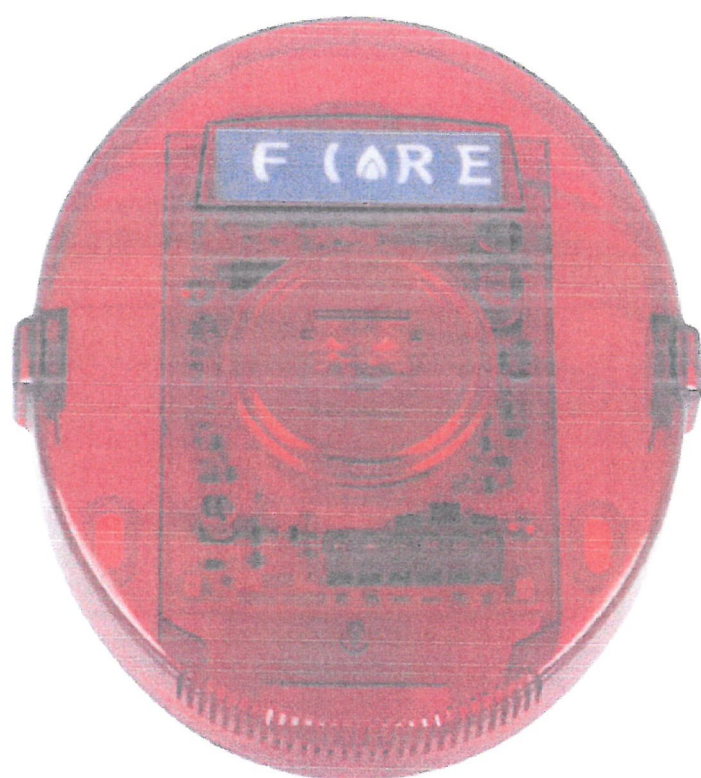
- Type – potential free, switching
- Electrical characteristics – 3A/125VAC; 3A/30VDC

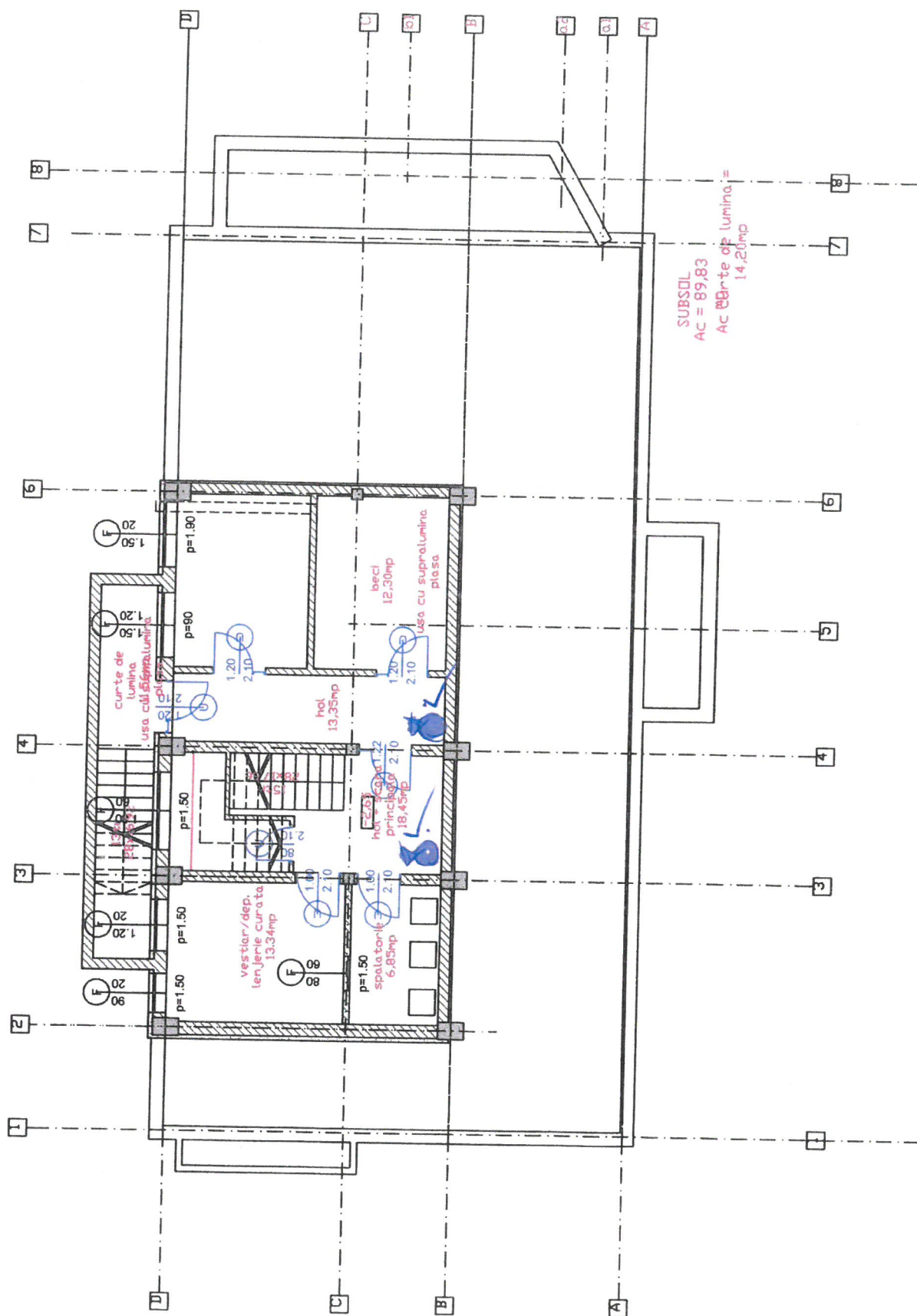
Performance:

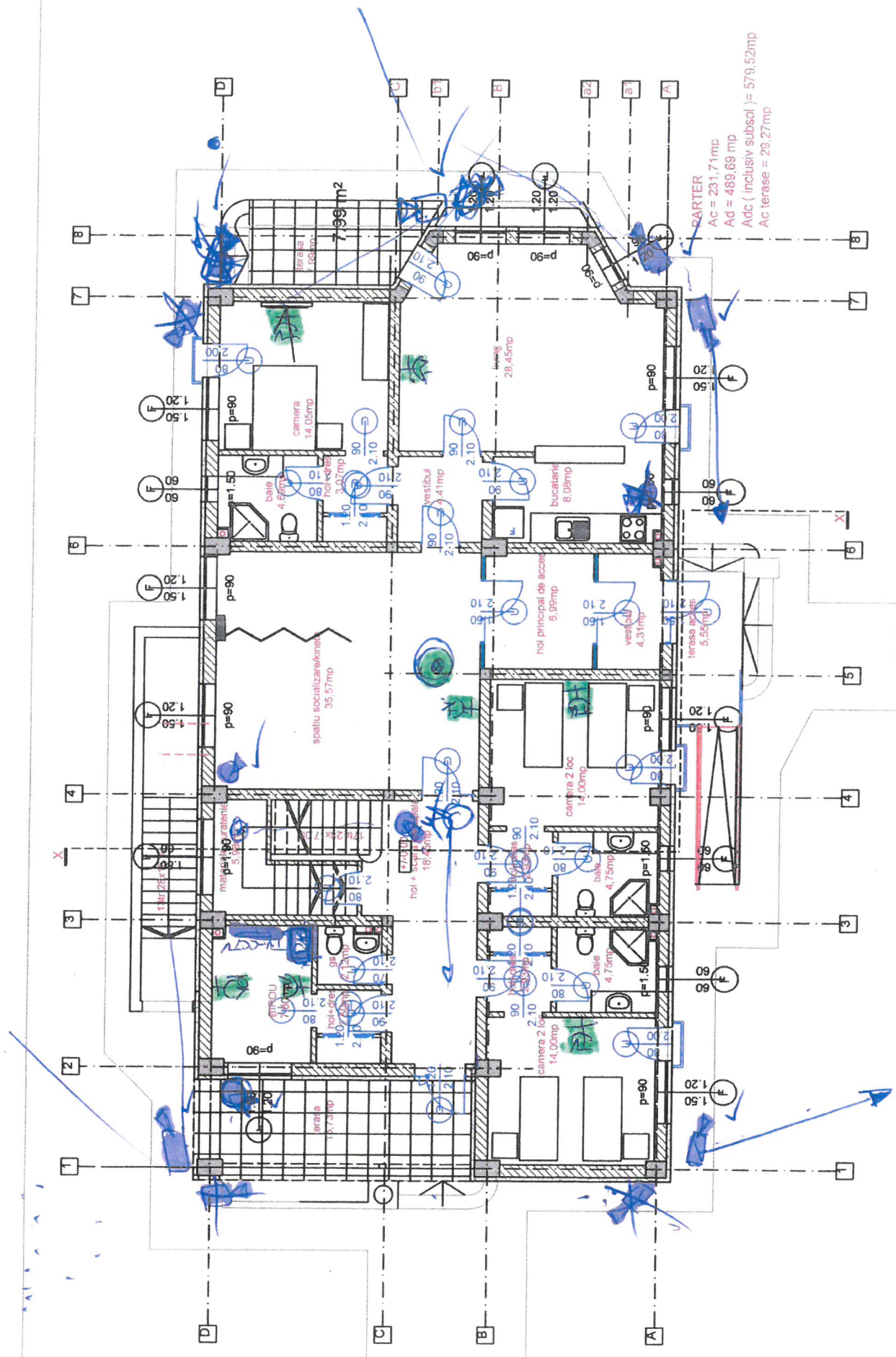
- Control over fire alarm loops and monitored outputs for fault conditions (short circuit and interruption) and automatic reset
- Dedicated led indication per fire zone
- Detection of removed devices in the loops and automatic reset

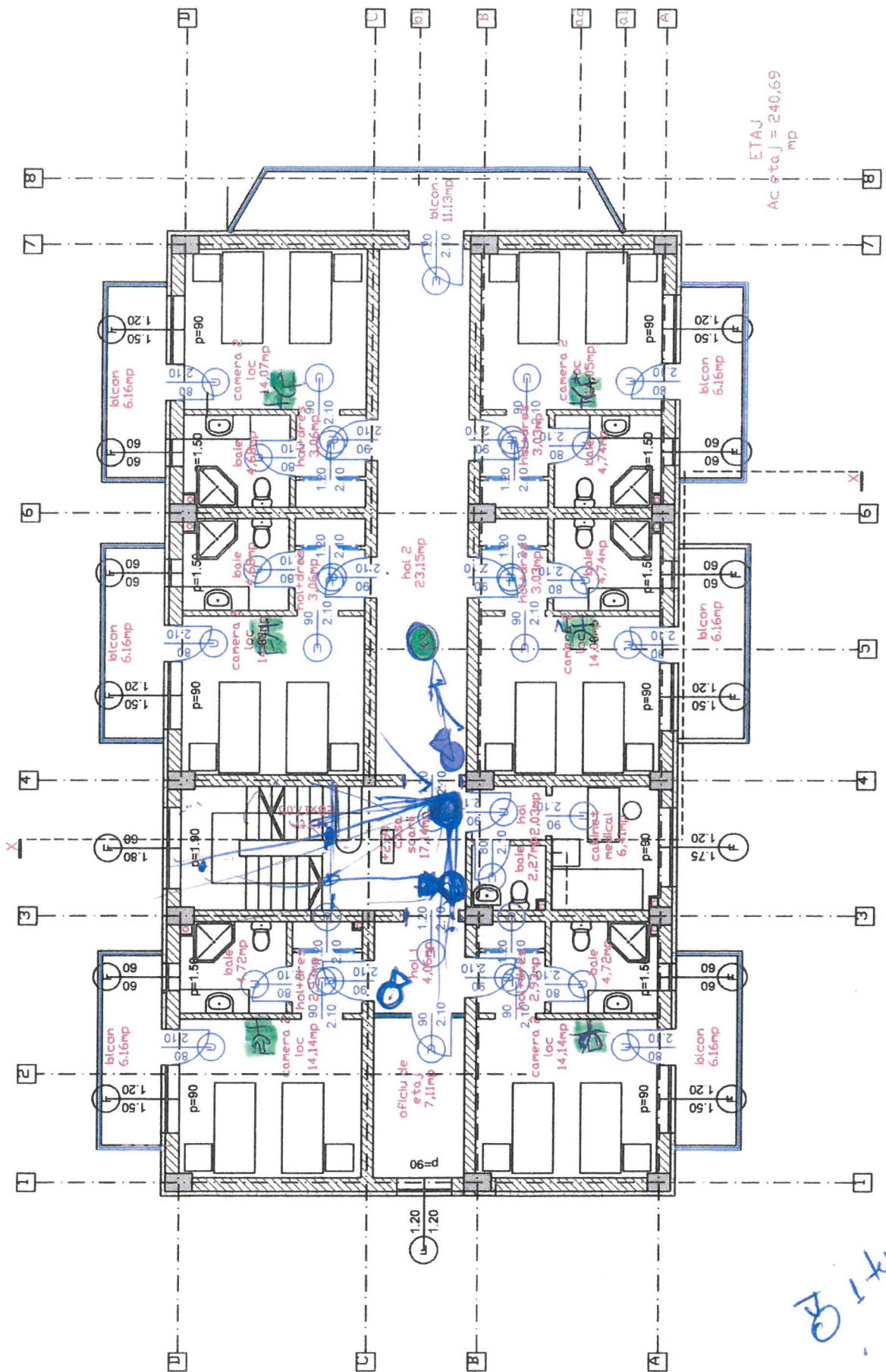










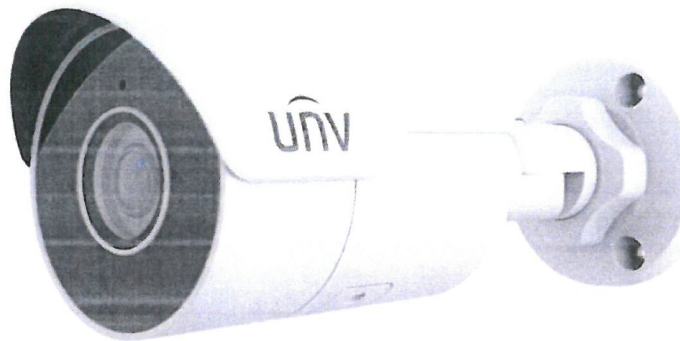


ETAJ
Ac & t_{0,j} = 240,69
mp

31 kras

4MP HD Mini IR Fixed Bullet Network Camera

IPC2124LE-ADF28(40)KM-G



Key Features



- High quality image with 4MP, 1/3"CMOS sensor
- 4MP (2688*1520)@ 25/20fps; 4MP (2560*1440)@ 25/20fps; 3MP (2304*1296) @30/25fps; 2MP (1920*1080) @30/25fps;
- Ultra 265, H.265, H.264, MJPEG
- EasyStar technology ensures high image quality in low illumination environment
- 120dB true WDR technology enables clear image in strong light scene
- Support 9:16 Corridor Mode
- Built-in Mic
- Smart IR, up to 50m (164ft) IR distance
- Supports 256 G Micro SD card
- IP67 protection
- Support PoE power supply
- 3-Axis

4MP Fixed IR Mini Bullet Network Camera

IPC2124LB-SF28(40)-A



Key Features



- High quality image with 4MP, 1/3.0"CMOS sensor
- 4MP (2560*1440)@25/20fps; 3MP (2304*1296)@25/20fps; 2MP (1920*1080)@30/25fps; 720P (1280*720)@30/25fps
- H.265, H.264
- Smart IR, up to 30m (98ft) IR distance
- Day/night functionality
- 2D/3D DNR (Digital Noise Reduction)
- IP67 protection
- DC12V or PoE(IEEE 802.3af) power supply
- 3-Axis

4MP Fixed IR Eyeball Network Camera

IPC3614LB-SF28-A



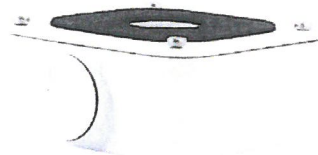
Key Features



- High quality image with 4MP, 1/3" CMOS sensor
- 4MP (2560*1440)@25/20fps; 3MP (2304*1296)@25/20fps; 2MP (1920*1080)@30/25fps
- H.265, H.264
- Smart IR, up to 30m (98ft) IR distance
- Day/night functionality
- 2D/3D DNR (Digital Noise Reduction)
- IP67 protection
- DC12V or PoE(IEEE 802.3af) power supply
- 3-Axis

Mini Bullet Dome Junction Box

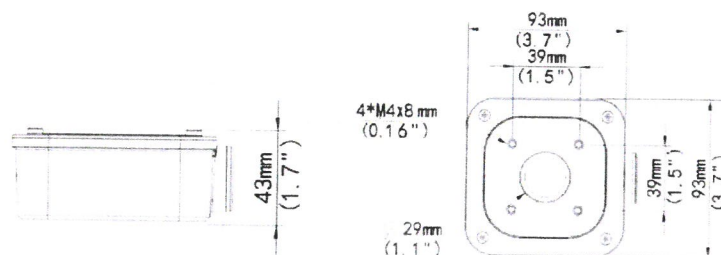
TR-JB05-IN



Specifications

Bracket	TR-JB05-IN
Application	Junction box for mini bullet dome camera(Extra back outlet)
Dimensions	93mmx93mmx43mm(3.7" x3.7"x 1.7")
Weight	0.2kg(0.44lb)
Material	Aluminum alloy

Dimensions



Zhejiang Uniview Technologies Co.,Ltd.

South Tower, Building 10, Wanlun Science Park, 88 Jiangling Road, Hangzhou, P.R.China 310051

Email: overseasbusiness@uniview.com; globalsupport@uniview.com

<http://www.uniview.com>

©2015 Zhejiang Uniview Technologies Co.,Ltd. All rights reserved.

*Product specifications and availability are subject to change without notice.

ASY-PDU-8

Unitate de distribuție alimentare rackabilă PDA

PDU 1U pentru rack-uri de 19", 8 prize Shucko, protecție la suprasarcină, buton general ON/OFF.

Caracteristici	ASY-PDU-8
STANDARD	EU
MATERIAL	Aluminiu
CULOARE	Negru
PRIZE	8
MĂRIME	483 x 44 x 44 mm
GREUTATE	0,87 Kg
INSTALARE	Orizontală
CABLU	VDE 3 x 1.5 mm ² , lungime 2m
TENSIUNE	220-250V, 50-60HZ
CURENT	10A/16A
PUTERE MAXIMĂ	3500 W
FUNCȚII SUPLIMENTARE	Comutator ON-OFF, Protecție suprasarcină.

Intrerupător ON/OFF cu LED
de stare și capac protecție

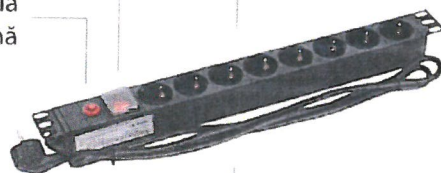
Siguranță fuzibilă
la suprasarcină

8 x prize tip Shucko cu împământare
(standard European)

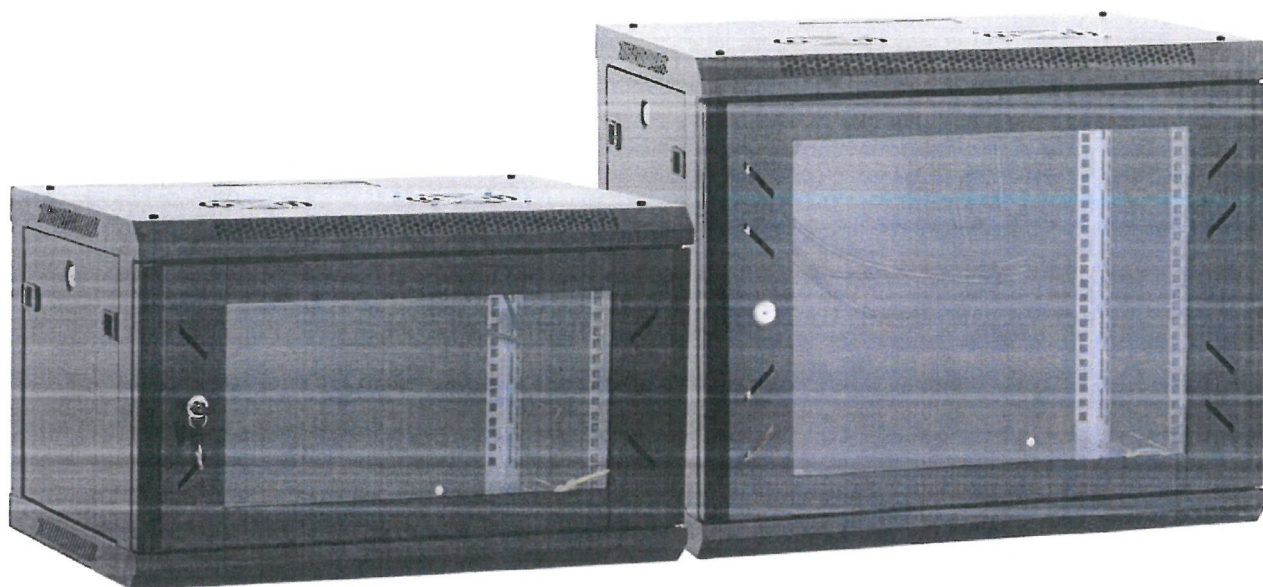
Flanșă de fixare în rack,
dimensiune 1U



Stecher cu împământare
(strandard european)



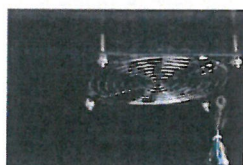
Cablu VDE cu lungime de 2 metri,
3 x 1.5 mm²



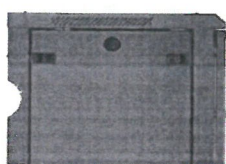
DETALII



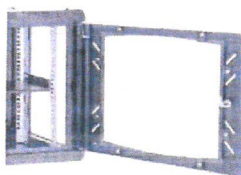
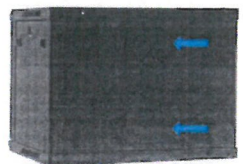
Predecupări montare ventilatoare



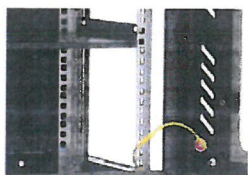
Acces cabluri panou spate



Panouri laterale detaşabile (posibilitate blocare opţională)



Încuietoare metalică



Montare în câmp electrolitic (împământare opţională)

STANDARDE

Conform ANSI/EIA RS-310-D, DIN41497 part 1, IEC297-2, DIN41494 part 7, GB/T3047.2-92

CARACTERISTICI

Standard industrial 19 inch

Panouri laterale detaşabile (blocare opţională)

Predecupare pentru acces cabluri în panoul superior, inferior, spate

Uşă din sticlă securizată, prevăzută cu încuietoare metalică

Deschidere uşă la 180 grade

Asamblare şi montare uşoară

Gamă variată de dimensiuni şi accesorii

CAPACITATE ÎNCĂRCARE

80 Kg

GRAD DE PROTECŢIE

IP 20

MATERIAL

Înveliș din oțel laminat la rece, fosfatat (SPCC)

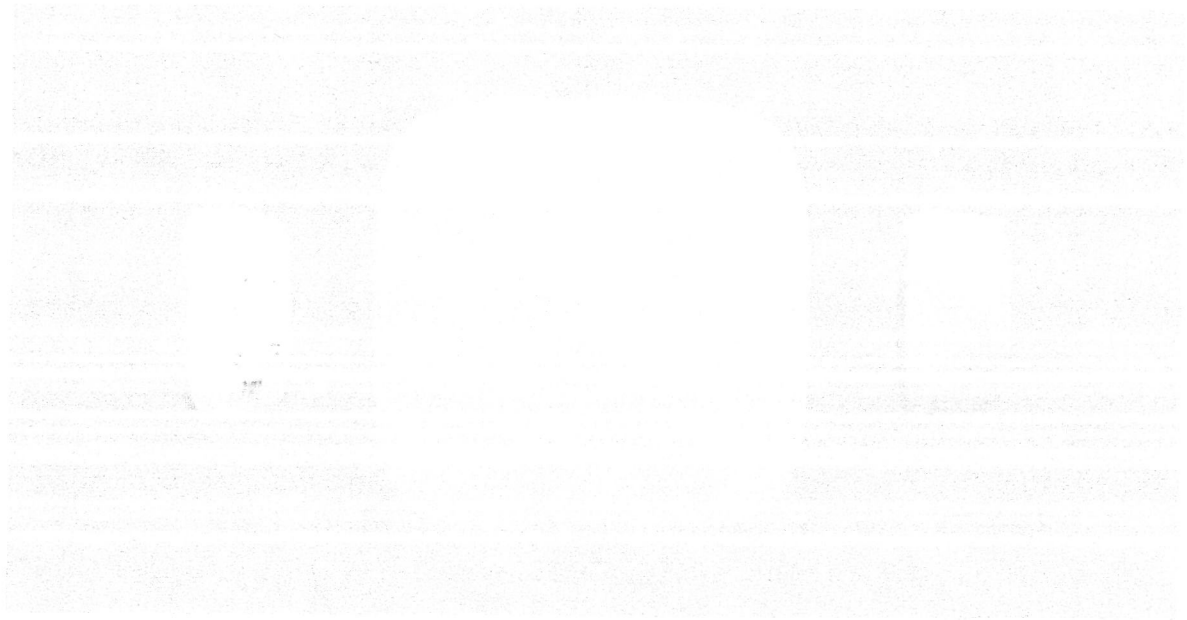
Grosime: 2.0mm-1.0mm-0.8mm

TRATAMENT MATERIAL

Vopsire în câmp electrostatic

Hub 2 (2G) / (4G) User Manual

Posted on February 28, 2022



Hub 2 is a security system control panel that supports photo verification of alarms. It controls the operation of all connected devices and interacts with the user and the security company. The device is designed for indoor installation only.

The hub reports doors opening, breaking of windows, the threat of fire or flood, and automates routine actions using scenarios. If outsiders enter the secure room, Hub 2 will send photos from **MotionCam** / **MotionCam Outdoor** motion detectors and notify a security company patrol.

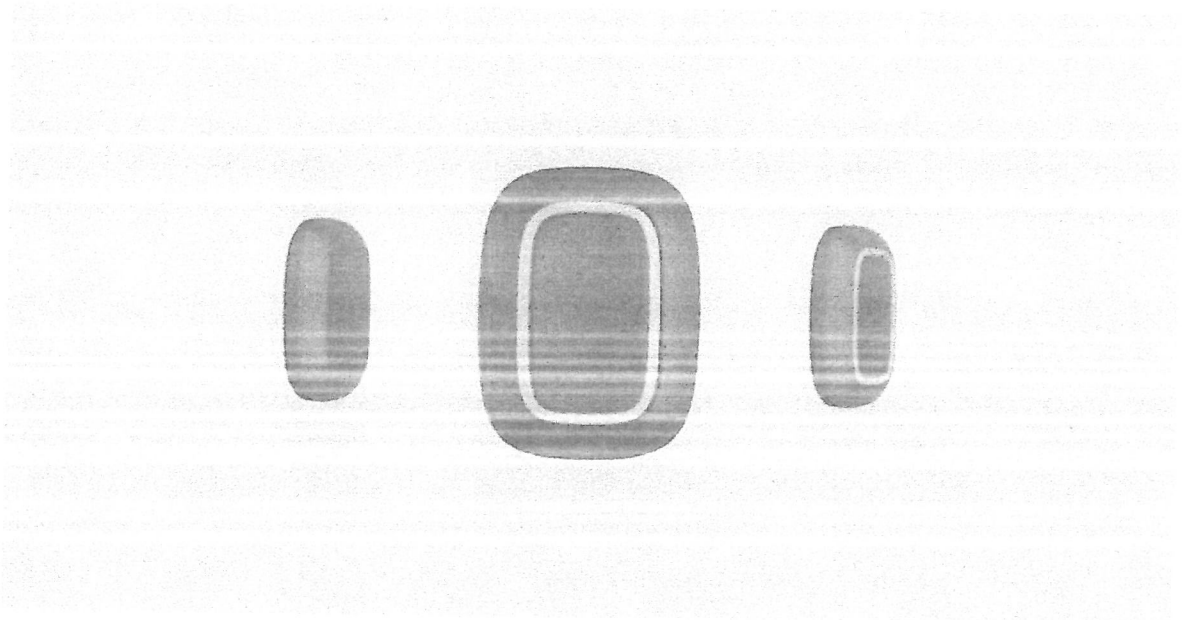
Hub 2 needs internet access to connect to the Ajax Cloud service. The control panel has three communication channels: Ethernet and two SIM cards. The hub is available in two versions: with 2G and 2G/3G/4G (LTE) modem.



Connect all communication channels to ensure a more reliable connection with Ajax Cloud and secure against interruptions in the work of telecom operators.

Button User Manual

Updated February 18, 2022



Button is a wireless panic button with protection against accidental press and additional mode to control **automation devices**.



Button is compatible with **Ajax hubs** only. No support for **ocBridge Plus** and **uartBridge** integration modules!

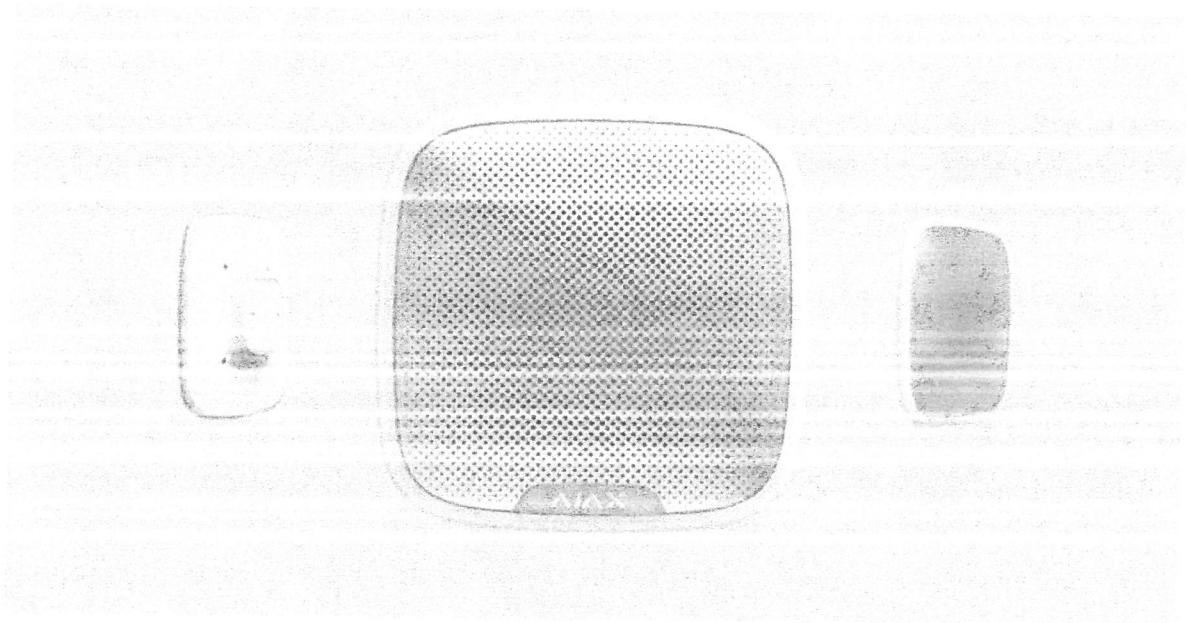
Button is connected to the security system and configured via **Ajax apps** on iOS, Android, macOS, and Windows. The users are alerted of all alarms and events via push notifications, SMS, and phone calls (if enabled).

Buy panic button Button

Functional elements

StreetSiren User Manual

Updated January 24, 2022



StreetSiren is a wireless outdoor alerting device with a sound volume of up to 113 dB. Equipped with a bright LED frame and pre-installed battery, StreetSiren can be quickly installed, set up, and operate autonomously up to 5 years.

Connecting to the Ajax security system via the secured **Jeweller** radio protocol, StreetSiren communicates with the **hub** at a distance of up to 1,500 m in line of sight.

The device is set up via the **Ajax apps** for iOS, Android, macOS, and Windows. The system notifies users of all events through push notifications, SMS, and calls (if activated).



StreetSiren operates with **Ajax hubs** only and does not support connecting via **uartBridge** or **ocBridge Plus** integration modules.